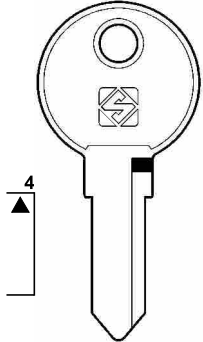

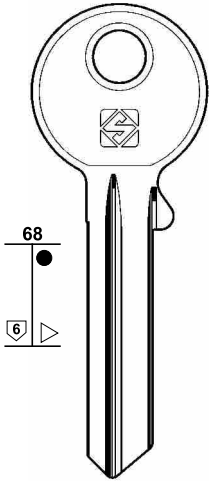
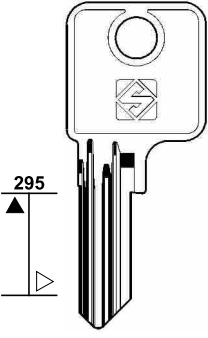


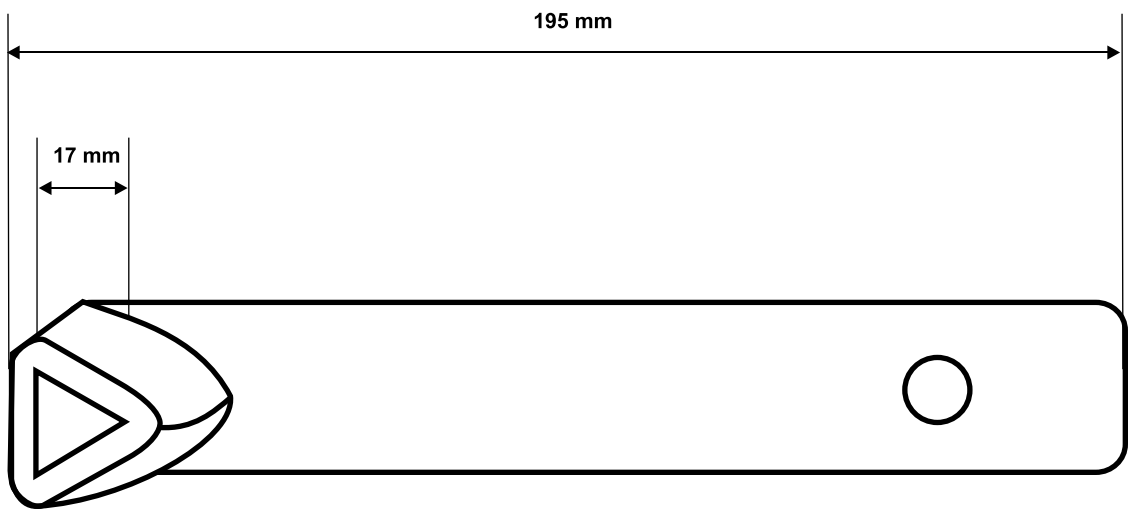


PER: FOR: BURG WÄCHTER	CES	DOM	
 <p>4</p> <p>BUR31 BUR31R</p> 	 <p>68</p> <p>6</p> <p>CE14PS (CE129-77)</p>	 <p>295</p> <p>DM137</p>	 <p>1</p>
<p>PER / FOR</p> <p>BODA (SF)  CES</p> <p>BURG (D)</p> <p>CES (D) BODA THOMÉE</p> <p>DOM (D)</p>			

PER:
FOR:

Art. 302 N *



www.silca.de

Copyright by Silca S.p.A. 2004



2

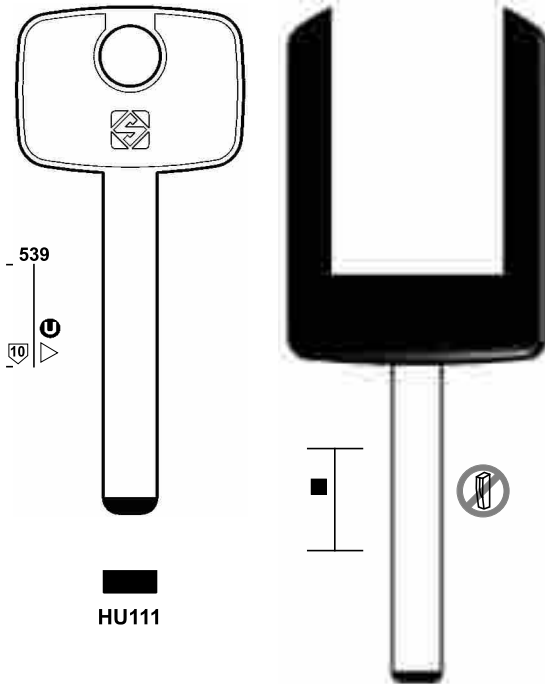
PER / FOR

HUF (D)

CAWI (D)
(Wittkop)

PER:
FOR:

HUF

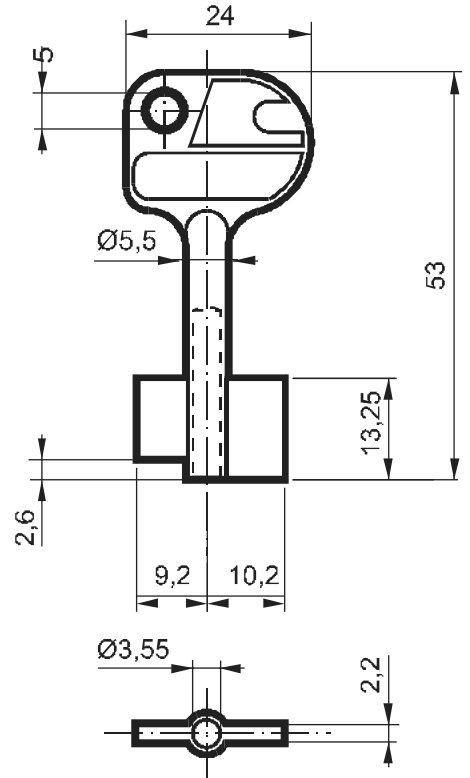


HU111

HU100BT12

für Opel Agila 2004 und Meriva 2004

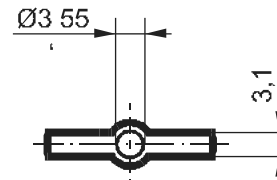
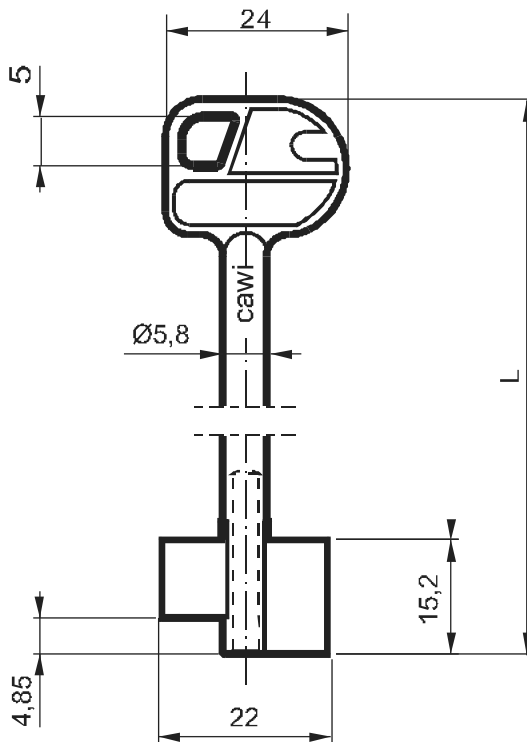
CAWI



Art. 6CAW1 *
Zink Druckguss

PER:
FOR:

CAWI



Bestellnummern :

Art. 6CAW2 *
Zink Druckguss
L= 65 mm

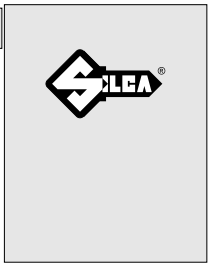
Art. 6CAW3 *
Zink Druckguss
L= 95 mm

www.silca.de

Copyright by Silca S.p.A. 2004

PER: **KABA MAUER**
FOR:

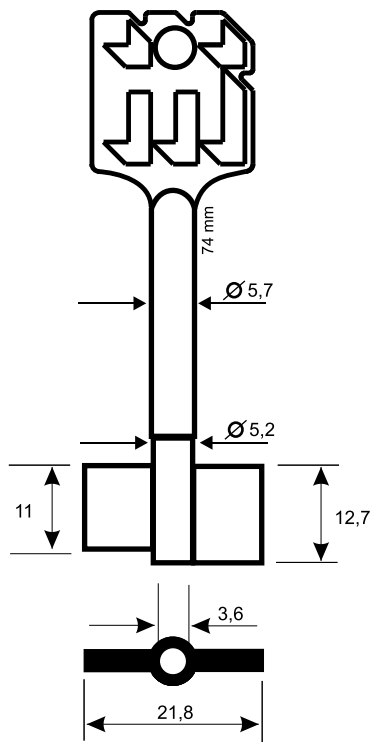
PEGAU



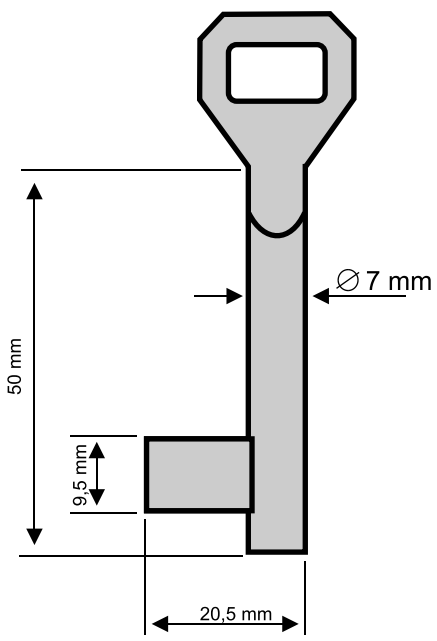
3

PER / FOR
KABA MAUER (D)
PEGAU (D)

www.silca.de



Art. 5MAU1 *
Messing



Buntbartschlüssel System Pegau
wird verwendet z.B. für : ABUS BB-Schlösser

Art.Nr. 9 PE- ..

